

Adult Christian Education—10 a.m.

Anabaptist Theology/History—Meets in Sanctuary

What was it, what is it, and what could it be. Speakers will provide instruction on the historical, current/future aspects of where Anabaptists fit in, and global aspects of Anabaptism.

Today: Mennonite Church Today

Facilitator: Urbane Peachey

Presenter: Dale Stoltzfus

Abuse: Severely Symptomatic Relationships—Meets in Sattler Room

Input and discussion will develop an understanding of abuse and its cycles, family and congregational dynamics, and the suffering connected to abuse. Based on If I Cry, Will Someone Understand Me? by Pauline Zimmerman.

Today: Dynamics of Religion: Forgiveness and Faith Reinforcing and Changing the Cycle

Presentation and Discussion: Ruth Dunlap

Parts of the movie *After Incest* will be shown.

The Parrot Café: Newspapers, Conversation and Coffee—Meets in basement Fellowship Room

Join us for an informal space to gather. There are tables where you can read or talk, and enjoy coffee available in the Christian Ed lobby.

This week at CMCL

Today—Fellowship Meal After Second Service

Monday, May 7—Worship Committee, 7 p.m.

Tuesday, May 8—Frances Miller and Pritam Hari Concert, 7 p.m.

Wednesday, May 9—Mom's Group, 9 a.m.

Wednesday, May 9—Dinner Out

Saturday, May 12—Sing the Journey Workshop, 2 p.m. and 7 p.m.

Church Information

Contact the church office staff at 392-7567, cmcl@communitymennonite.org

Worship: 8:30 a.m. and 11 a.m.; Christian Ed—10 a.m.

Information for bulletin due in church office by 4 p.m., Wednesday

Pastor: Pam Dintaman (day off—Thursday); dintaman@communitymennonite.org

Associate Pastor: Chad Martin (beginning June, 2007)

chad@communitymennonite.org

Director of Children & Youth: Emily Smucker Beidler

emilysb@communitymennonite.org

Elders: Laura Boll, Dennis Clemmer, Phil Kauffman-Jantzi, Marilyn Kennel

Office Staff: Rod Houser (Tue, Wed and Fri), Temp Staff (Mon and Thu)

Small Groups: For information contact Gerald Ressler (627-1830) or church office.

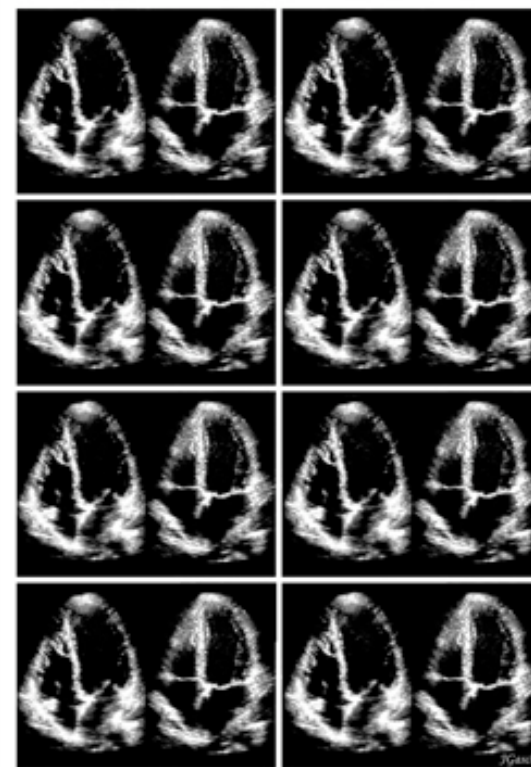
Website: www.communitymennonite.org

COMMUNITY MENNONITE CHURCH OF LANCASTER

328 West Orange Street, Lancaster, PA 17603

May 6, 2007

Easter 5



Diastole Systole

Order of Worship

2 Corinthians 4:7

But we have this treasure in clay jars, so that it may be made clear that this extraordinary power belongs to God and does not come from us.

Prelude Jesse Reist

Call to Worship

If the prophets did so, and if Jesus did so, we too must go out into the desert from time to time.

It is not a question of transporting oneself there physically. For many of us that could be a luxury. Rather, it implies creating a desert space in one's own life. And to create a desert means to seek solitude, to withdraw from men and things, one of the undisputed principles of mental health.

To create a desert means learning to be self-sufficient, learning to remain undisturbed with one's own thoughts, one's own prayer, one's own destiny. It means shutting oneself up in one's room, remaining alone in an empty church, setting up a small oratory for oneself in an attic or at the end of a passage in which to localize one's personal contact with God, to draw breath, to recover one's inner peace. It means occasionally devoting a whole day to prayer, it means going off into the loneliness of the mountains, or getting up alone in the night to pray.

When all is said and done, creating a desert means nothing more than obeying God—because there is a commandment (arguably the most forgotten of all, especially by the "committed," by militants, by priests and even bishops) which requires us to interrupt our work, to put aside our daily tasks and seek the refreshing stillness of contemplation.

—Carlo Carretto, from *In Search of the Beyond*

Singing *I'll praise my maker* Hymnal #392

Children's Time Darrell Yoder

*Children age 4 and under may go to childcare.
Activity sheets are available for others through grade five.*

Offering/Offertory Jesse Reist

Scripture Genesis 2: 4b–7

In the day that the Lord God made the earth and the heavens,⁵ when no plant of the field was yet in the earth and no herb of the field had yet sprung up—for the Lord God had not caused it to rain upon the earth, and there was no one to till the ground;⁶ but a stream would rise from the earth, and water the whole face of the ground—⁷ then the Lord God formed man from the dust of the ground, and breathed into his nostrils the breath of life; and the man became a living being.

Singing *Breathe on me breath of God* Hymnal #356

Sermon “Diastole” Joseph Gascho

Singing *Heart and mind, possessions, Lord* Hymnal #392

Congregational Sharing and Welcome of Visitors

Where do you sense God moving among us? This is a time to respond to the scripture, music and message of the morning. We're glad to hear who the visitors are among us. There are cards in the back of the hymnal for visitors as well as any sharing for our e-mail listserve.

Announcements

Singing *And I will raise you up* Hymnal #596

Benediction

Now may our Lord Jesus Christ and God our Father-Mother, who loved us and through grace gave us eternal comfort and hope, comfort your hearts (in diastole and systole) and strengthen them in every good work and word.

II Thessalonians 2:16, 17.

Worship Leader—Herb Myers

Song Leader—Leon Miller

Sound Technician—Don Kulp

1st Service Greeter/Ushers—Diane Umble/Wayne Lehman, Milton Lehman

2nd Service Greeter/Ushers—Mary Gattis-Schell/Gladys Horst, Linda High

Childcare

1st Service—Laura Boll, Annie deVitry

Christian Ed—Desiree Reesor, Audrey Roth Kraybill

2nd Service—Christine Kaufman, Jeff Simms

We extend a warm welcome to our visitors.

- Join us for coffee at 9:40 a.m. in Christian Ed foyer.
- Assisted Listening Devices are located at the rear of the sanctuary.
- Sign visitor card in back pocket of hymnal.
- Pick up info booklet in foyer to learn more about our faith community.
- Contact church office to receive announcements and/or sermons by email.
- Sunday parking is available at Groff Funeral Home, 1 block east.
- Recordings of past services are available in the church library.
- Restrooms on lower level near kitchen